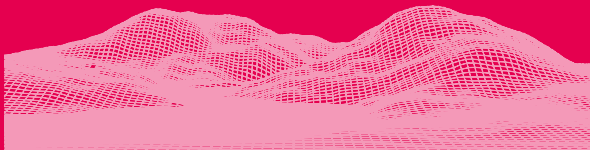


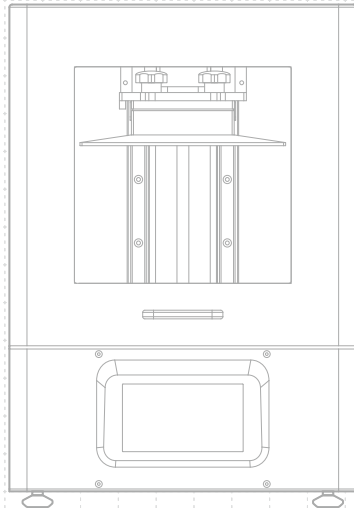


SONIC XL 4K
2 0 2 2



Dear User,

Thank you for joining us. Please read through the entire manual and follow step-by-step instructions to get the best printing experience.



01 Introduction

Printer Parts

PART.1
Building Plate

PART.2
Air Filtration System

PART.3
Resin Vat

PART.4
LCD Screen

PART.5
Touch Panel

PART.8
Power Switch
Power Socket

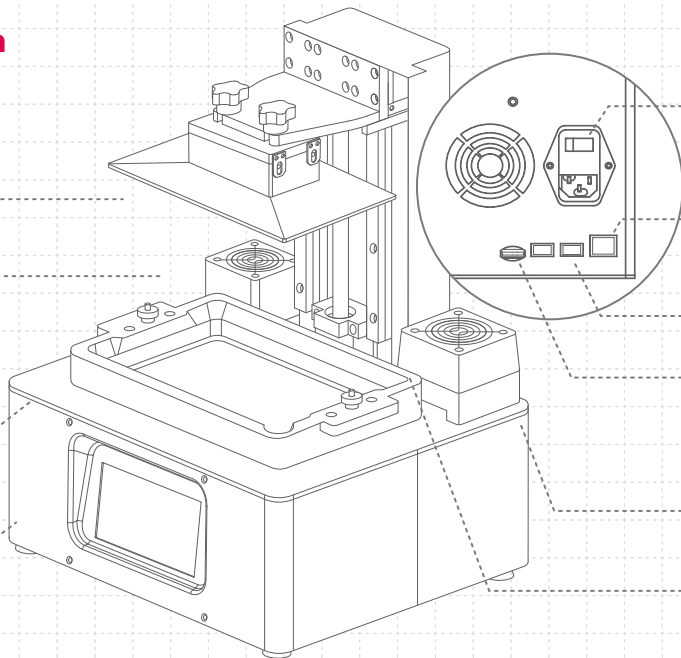
PART.9
Network Port

PART.10
USB Port

PART.11
Phrozen OS
SD Card

PART.6
Heater

PART.7
Z-axis



The Toolbox



After Sales Service Card



Gloves



Power Connector



Plastic Funnel



Scrapers



Allen Wrench



USB



WiFi Adapter



Handle

Operation

System	Phrozen OS
Operation	5 inch Touch Panel
Slicer Software	Phrozen Dental Synergy Slicer
Connectivity	USB Ethernet WIFI

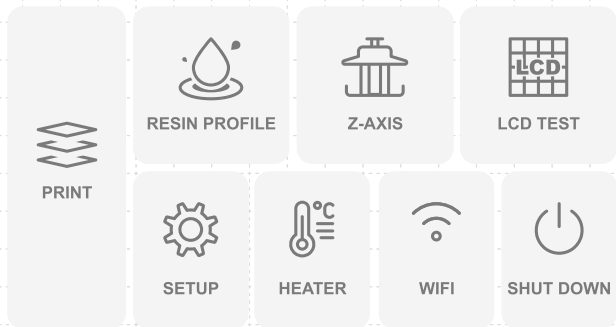
Printing Specifications

Technology	Resin 3D Printer - LCD Type
Light Source	405nm ParaLED® 3.0 Module
XY Resolution	0.052 mm
Layer Thickness	0.01 - 0.30 mm
Max Printing Speed	90 mm / hr
Power Requirement	AC100-240V ; 50-60Hz

Hardware Specifications

Printer Size	L29 x W33 x H47 cm
Printing Volume	L20 x W12.5 x H20 cm
Printer Weight	17.2 kg

* All specifications have been tested in a laboratory. Please note that certain specifications may be subject to change without prior notice.



PRINT

Choose your 3D file to begin printing.

RESIN PROFILE

To adjust your settings, click on RESIN PROFILE.

Z-AXIS

Follow instructions on the manual to calibrate the Z-axis.

LCD TEST

Please follow instructions in the user manual to conduct the LCD test.

WIFI

Connects to Phrozen OS Interface.

POWER BUTTON

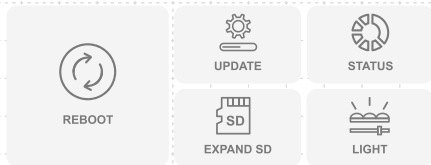
Click on SHUT DOWN. Then switch off the button at the back to completely turn off the device and avoid system damage.

Notice:

For first-time usage, please follow the user manual and conduct the following steps: Perform Z-axis Calibration, LCD Test, and Test Printing.

SET UP

Click on this button to adjust REBOOT, UPDATE, EXPAND SD, SATATUS and LIGHT settings.



STATUS: Displays the SD Capacity, CPU temperature, and CPU Performance.

LIGHT: Manually adjust the LED light settings from 50% to 100%. The default value is the best performance.

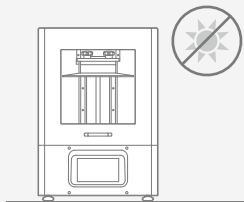
HEATER

Toggle the on/ off button to stabilize the printer temperate between 30 or 35°C

Tips: After pausing the print for more than an hour, the heater will automatically turn off. Reset this function each time you restart printing.

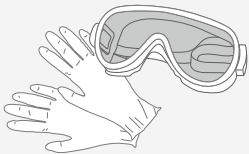


02 Key Notes Before Start



Stable Printing Environment

Store your 3D printer in a dry and ventilated environment. Avoid exposure to direct sunlight. Make sure to place the printer on a flat surface.



Protective Measures

While printing and using resin, please make sure to wear gloves, masks, protective goggles, and long-sleeved clothing.

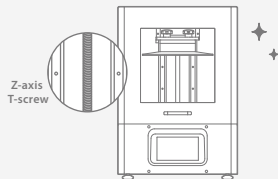
Maintenance

Clean the Z-axis

First, dry clean the Z-axis T-screw. Then apply a thin layer of general lubricant on it, so that it whirls smoothly.

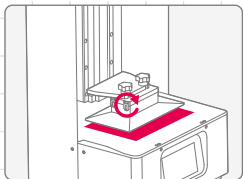
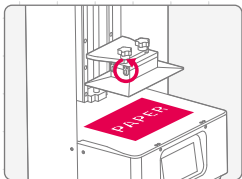
Clean the 3D Printer

Use sanitizing alcohol and tissue paper to carefully clean the printer, the resin vat, and the building plate.



03 Z-axis Calibration

- 1 Click on Z-axis. Then click on Z-axis Calibration.
- 2 Remove the resin vat and place a piece of paper on the LCD screen.
- 3 Install the building plate and loosen all 4 screws on the building plate.
- 4 Click on NEXT.
- 5 The building plate will then be lowered to touch the LCD screen.
- 6 Tighten all 4 screws on the building plate and click DONE.
- 7 Z-axis Calibration is now complete.



04 LCD Test

- 1 Click on LCD TEST.
- 2 There are three modes to choose from. Please test your LCD screen in the following order.
- 3 When all three modes are clearly displayed on the LCD, LCD TEST is completed.



LCD FILL UP

Confirm the LCD screen fully lights up and there are no black spots.



BLACKENED LCD SCREEN

Confirm the LCD screen covers all the light and there are no light spots.



LCD GRID

Confirm that the LCD screen displays the grid completely.

* *Please refer to the actual printer operation, based on the touchscreen display.

05 Set Up Resin Profiles

Setting on Printer

Follow these steps on the touchscreen:

Resin Profiles > Select the Profile > Modify Settings >

Click "V"

Connect to Phrozen OS Interface

1 Follow these steps on the touchscreen:

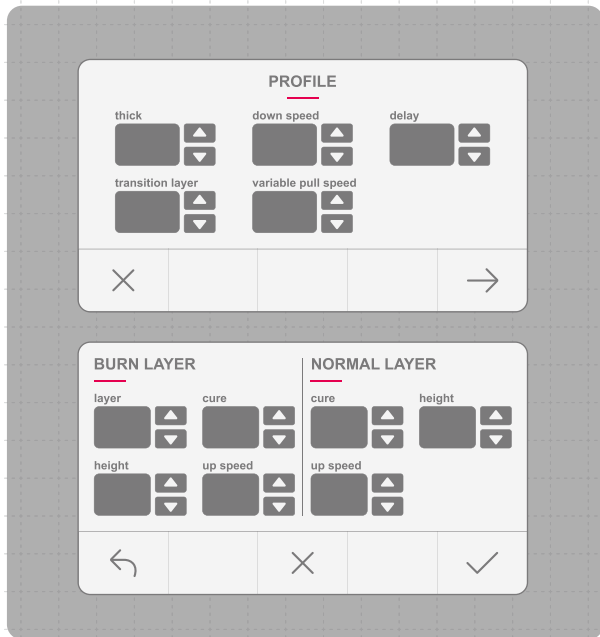
WIFI > Select Wireless Network > Enter Password >

Connect > Click OK

2 The IP address will be shown on top of the touchscreen.

3 Open the web browser and type in the IP address of your resin 3D printer.

Notice: Please set the layer height and anti-aliasing in the slicer. They are unable to be adjusted through the printer nor the Phrozen OS Interface.



Resin Profile Setting on Phrozen OS Interface

Select the PROFILE page. You can adjust the resin settings, ADD, UPDATE, DELETE or EXPORT the resin profiles, according to your needs.



Online Resin Profile

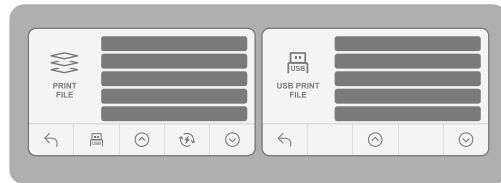
06 Import 3D Files

via Phrozen OS Interface

- 1 Slice your 3D prints in a slicer software and save it as a **.zip file**.
- 2 Enter Phrozen OS Interface. Select PLATES page. Choose the file from your device and upload it onto the 3D printer.

via USB

- 1 Plug in the USB drive into the 3D printer.
- 2 Using the touchscreen, follow these steps:
PRINT > USB icon > 3D file.zip > Wait for Upload



07 Perform the Printing Test

Test Printing

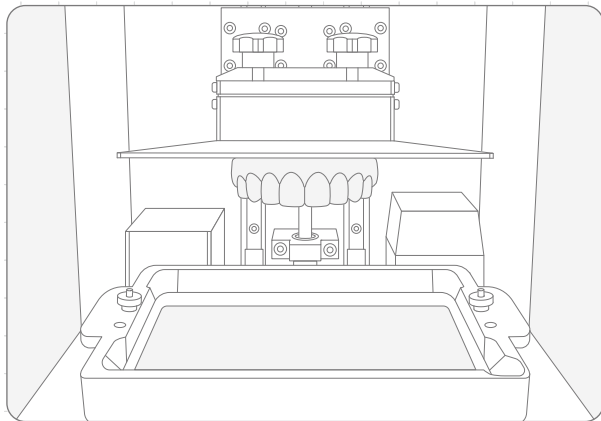
After adjusting the Resin Profile Settings and Importing your Files, we can now Perform the Printing Test.

- 1** Install the building plate and resin vat. Make sure that both are parallel to the printer and its surface is clean.
- 2** Shake the resin bottle for 1 minute. When pouring, make sure the resin does not exceed the mark on the resin vat.
- 3** Click "GO." The building plate will be lowered and the printer will automatically begin printing after a 15 sec delay.

Tips: After 15 sec, the touch panel will automatically display the print page. DO NOT operate the printer before the delayed start in order to avoid a system crash.

- 4** When the printing process begins, the Air Filtration System will turn on automatically.

- 5** Keep the cover closed during printing to prevent excessive UV light.
- 6** Tilt and place the building plate onto a desk and use a metal scraper to carefully remove your print.



Resume Printing

During the printing process, if the printing is interrupted due to power failure, or printer shutdown, the printing process will be halted. To continue printing the same 3D file, turn the power on and follow the steps below:

Click the following buttons on the touchscreen:

Print > Resume Function > Resume: Yes

Please be aware that there may be a few layer seams present in the printed 3D model as a result of pausing the print.

If using the HEATER, remember to turn on this function when continuing to print the 3D file.



Notice: Frequent abnormal power outages may result in system failure.

After-sales service & warranty

- Phrozen offers a one-year warranty for all parts, excluding consumable components such as the LCD screen and FEP film.
- Sonic XL 4K 2022 screen is covered under a 3-month warranty. Please note that this warranty does not cover any damages caused by human factors.
- If you encounter any difficulties, please scan the QR codes down below to contact us.



Contact us!

Congratulations!

You have just completed your first run.
We hope you've had a great experience!

Please follow us on social media and subscribe
to our Youtube channel to learn more printing
tips, share your creations with the community.



Facebook



Facebook Group



YouTube



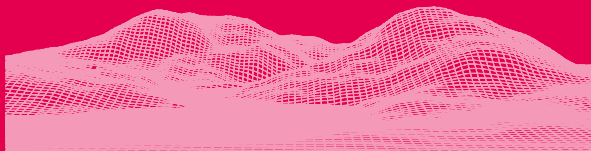
Official Website



Chinese User Manual

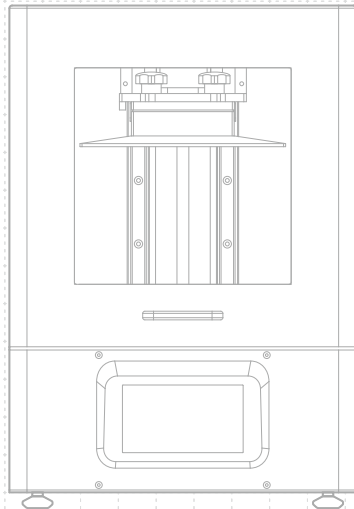


SONIC XL 4K
2 0 2 2



親愛的使用者您好，

非常開心您的加入，為了您良好的使用經驗，請您務必詳閱產品說明書進行產品測試及列印。



01 產品介紹

機台構造說明

PART.1

列印載台

PART.2

空氣過濾系統

PART.3

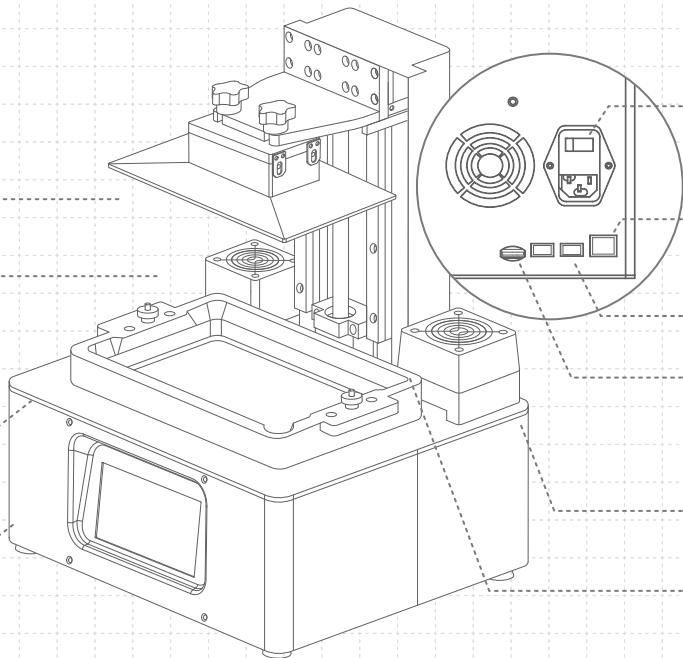
樹脂槽

PART.4

LCD 面板

PART.5

觸控螢幕



PART.8

電源開關
電源接孔

PART.9

網路接孔

PART.10

USB插孔

PART.11

Phrozen OS
SD記憶卡

PART.6

加熱器

PART.7

Z軸

配件盒內容物



客服保固卡



手套



電源線



塑膠漏斗



軟硬刮刀



六角板手



USB



USB無線網卡



把手配件

操作系統

操作系統	Phrozen OS系統
操作介面	5吋 IPS觸控面板
切片軟體	Phrozen Dental Synergy Slicer
檔案傳輸模式	USB 乙太網路 WIFI

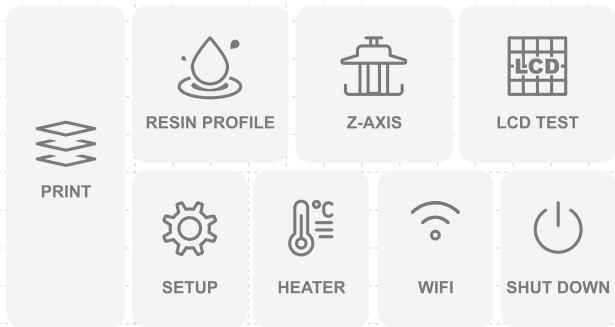
技術規格

技術規格	光固化 3D 列印機
光源設計	405nm 波長 ParaLED Matrix 3.0
XY 解析度	0.052 mm
切層厚度	0.01-0.30 mm
最快列印速度	90 mm / 小時
適用電壓	AC100-240V ; 50-60Hz

硬體規格

機台尺寸	長29 x 寬33 x 高47 公分
列印尺寸	長20 x 寬12.5 x 高20 公分
機台重量	17.2 公斤

* 以上為實驗測試數據，若有內容更改恕不另行通知。



注意事項：

首次列印時，請依照說明書執行以下步驟：Z軸校正、LCD測試與測試列印。

PRINT

選擇您的3D檔案並開始列印。

RESIN PROFILE

設定列印樹脂參數。

Z-AXIS

請依照說明書與觸控螢幕進行Z軸校正。

LCD TEST

請依照說明書與觸控螢幕進行LCD測試。

WIFI

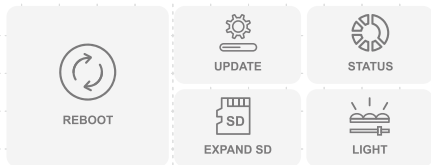
使用WIFI功能連線至 Phrozen OS 操作系統。

POWER BUTTON

關閉列印機前，請先點擊SHUT DOWN再關閉列印機背面的電源開關，避免操作系統受損。

SET UP

在此功能下，您可以進行重啟、更新、擴充記憶卡、調整LED光源強度與查看列印機狀態。



STATUS：由左至右顯示SD記憶卡容量、CPU溫度與CPU性能。

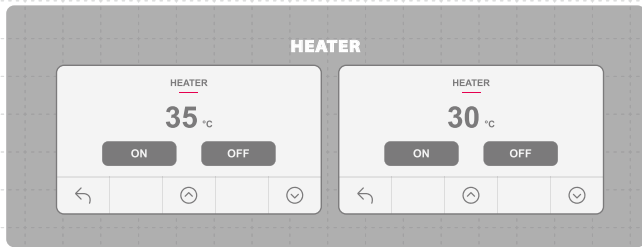
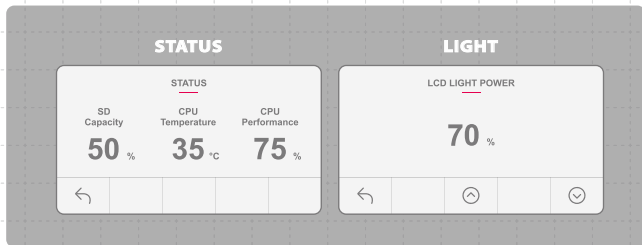
LIGHT：可依照使用情形，調整LED光源，光源可從50%至100%，預設值為列印機最佳表現。

HEATER

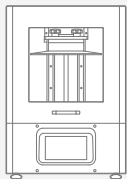
切換開關30度與35度恆溫設定。

提醒：恆溫設定需在以下狀況重新設置：

1. 列印暫停超過1小時。
2. 列印機關閉後重啟。

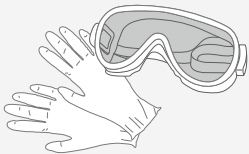


02 使用前注意事項



列印環境

請將3D列印機置於室內乾燥通風處之水平桌面，並避免陽光直射與高溫曝曬。



保護措施

進行列印時，請佩戴手套、口罩、護目鏡、長袖衣物等個人防護設備。

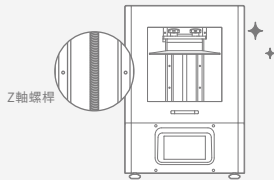
機台保養

Z軸清潔


擦乾Z軸螺桿後，請使用少量一般潤滑油，潤滑Z軸螺桿使其運行更順暢。

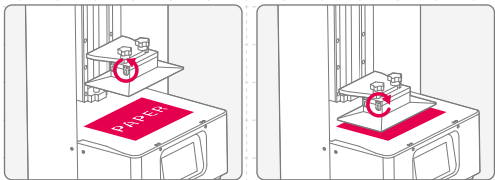
機台清潔

可使用消毒酒精與紙巾小心擦拭機台、樹脂槽與列印載台。



03 Z軸校正

- 1 點擊觸控面板上的 Z-axis，接著點選「」進行Z軸校正。
- 2 移除樹脂槽並放置一張影印紙在LCD面板上。
- 3 安裝列印載台，並將兩側四顆螺絲轉鬆。
- 4 點選「NEXT」。
- 5 列印載台將會下降至接觸LCD面板。
- 6 將列印載台上4顆螺絲鎖緊後點選「DONE」。
- 7 Z軸校正完成。



04 LCD 測試

- 1 點選「LCD TEST」。
- 2 螢幕上會出現三種模式，請依照下面順序進行測試。
- 3 當三種模式都清楚且完整呈現在LCD螢幕上，LCD測試即完成。



LCD FILL UP

請確認LCD面板全亮且無黑點。



BLACKENED LCD SCREEN

請確認LCD面板遮住所有光線且無光點。



LCD GRID

請確認LCD面板顯示完整格線。

* 實際操情形請依機台顯示為主。

05 設定樹脂參數

在列印機上設定

依以下步驟操作觸控面板：Resin Profiles > 選擇樹脂參數

> 調整參數設定 > 點選「V」。

連線至Phrozen OS系統

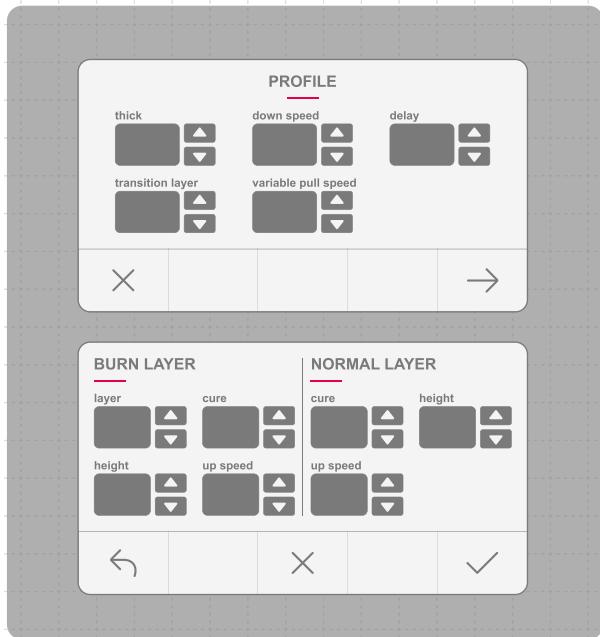
1 依以下步驟操作觸控面板：

WIFI > 選擇無線網路 > 輸入連線密碼 > Connect > OK

2 連線完成後，觸控螢幕上方將顯示列印機的IP碼。

3 打開網路瀏覽器，在搜尋中輸入IP碼，即可進入系統。

注意：請在切層軟體上設定好模型的層高與抗鋸齒，它們無法透過列印機與Phrozen OS系統作修改。



在Phrozen OS系統中設定樹脂參數

在PROFILE頁面除了調整細部的參數設定，也可利用「ADD、UPDATE、DELETE、EXPORT按鈕」執行「增加、更新、刪除、輸出設定」完成樹脂資料。



Phrozen官網樹脂參數

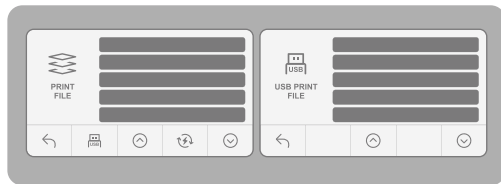
06 檔案傳輸

Phrozen OS系統傳輸

- 1 將3D模型透過切片軟體輸出存成 zip.檔。
- 2 進入Phrozen OS系統，進入PLATES頁面，選擇檔案上傳至列印機。

USB傳輸

- 1 將USB插入列印機。
- 2 依以下步驟操作觸控面板：PRINT > USB圖示 > 3D file.zip > 等待傳送完成。



07 進行測試列印

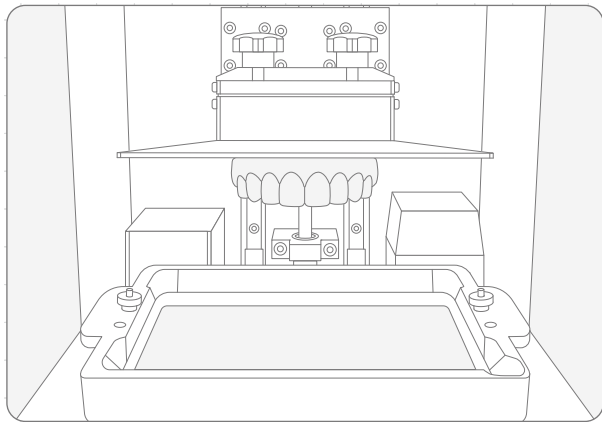
測試列印

在設定完樹脂參數與傳送列印檔案後，即可開始進行測試列印。

- 1** 安裝列印載台與樹脂槽，並確保兩者皆水平固定於機台上，且乾淨無異物。
- 2** 上下搖晃樹脂1分鐘後倒入樹脂槽，倒入時請勿超出樹脂槽上的「MAX」標記。
- 3** 點擊「GO」，載台下降至料槽。系統會自動延遲15秒後開始進行列印。

提醒：待15秒延遲結束，觸控螢幕會切換至列印畫面，在延遲進行時請勿操作列印機以避免系統當機。

- 4** 開始列印後，空氣過濾系統即會開始運轉。
- 5** 列印進行時請蓋上機殼，避免其他光源影響模型成形。
- 6** 列印完成後，請將列印載台斜靠桌面，使用金屬刮刀將列印成品小心取下。



斷電續印功能

在列印過程中，如遇到斷電或列印機關機而造成列印中斷，可使用此功能繼續列印同一個模型。

欲重新列印，請重開機器，並依照以下步驟操作：

Print > Resume Function > Resume: Yes

重啟列印後的模型無可避免會有一些接縫的痕跡。

若有使用恆溫功能，請記得在開機後再次開啟設定。



注意：經常性的不正常關機會增加系統故障機會。

產品保固與售後服務

- Phrozen機台提供1年非人為損壞保固，列印耗材LCD面板與FEP膜除外。
- Sonic XL 4K 2022的LCD面板提供3個月非人為損壞保固。
- 若使用上遇到任何問題，請掃描下方QRcode，聯絡Phrozen團隊。



Phrozen
客服團隊

恭喜

恭喜您完成初步操作流程，感謝您的支持並期望您有良好的使用體驗。

歡迎關注Phrozen的社群帳號，並訂閱我們的 Youtube Channel 學習更多關於列印的技巧並分享您的列印經驗。



Facebook



Facebook社團



YouTube



Phrozen官方網站